

University of Wisconsin-Madison | Division of Extension Racine County

ANNUAL REPORT 2023

An EEO/AA employer, University of Wisconsin Madison Division of Extension provides equal opportunities in employment and programming, including Title VI, Title IX, the Americans with Disabilities Act (ADA) and Section 504 of the Rehabilitation Act requirements.

Racine County Service Center | 1072 Milwaukee Ave | Burlington, WI 53105



(262) 767-2929



racine.extension.wisc.edu



@RacineCountyUWExtension



2023 AT A GLANCE

6,254

Total educational
contacts

2,265

Human Development
and Relationships
educational contacts

1,873

FoodWise nutrition
educational contacts

1,032

Total 4-H members

790

Residents in Racine,
Kenosha & Milwaukee
participated in the
plant health-advising
program

294

Positive Youth
Development
educational contacts

46

Children's books
distributed to justice-
involved families

HORTICULTURE

Landscape and Grounds Maintenance Short Course Program: A four-week online training program for the Green Industry audience in collaboration with Horticulture Educators in Dane and Waukesha County.

Spring into Gardening (SIG) Conference: Hosted a day-long gardening conference for consumers in collaboration with Racine Kenosha Master Gardener Association.

Urban Forestry Training Program: Hosted a day-long pruning workshop program in five locations across the state for municipal employees and private arborists. Collaboration with Wisconsin Department of Natural Resources (WDNR) Urban Foresters and Horticulture Educators in Dane and Waukesha County. Fifty (50) people participated in the Milwaukee location.

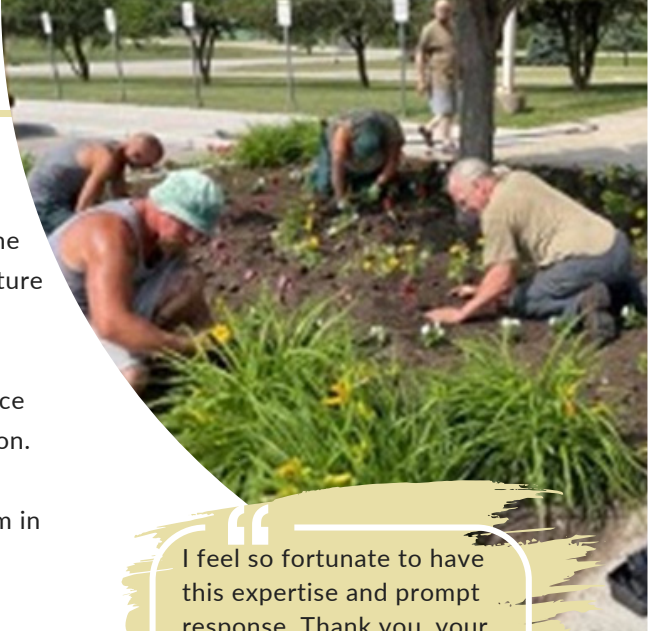
WAA/Extension's Urban Forestry Webinar: Hosted three urban forestry webinar series (55 attendees) in partnership with Wisconsin Arborist Association (WAA). The goal of this program is to provide professional development opportunities for professional arborists.

Arbor Day Program in Kenosha and Racine: Hosted Arbor Day tree planting ceremony in Racine County in partnership with the Racine Parks Department.

Plant Health Advising Program: Trained six (6) Master Gardener Volunteers, provided bi-weekly technical support in addressing consumer inquiries and responded to consumer text messages.

Gardening with Inmates: Collaborated with a Wisconsin Correctional Institute in teaching a weekly gardening program for seven (7) transitional inmates, which resulted in a community garden and landscape beautification in the facility.

Peer-reviewed Publication: The Horticulture educator co-authored and published "Alternatives to Lawns: Groundcovers," on the State Horticulture Extension Team website that is a valuable resource for green industry colleagues.



"I feel so fortunate to have this expertise and prompt response. Thank you, your staff is wonderful and really helpful during a difficult situation that I never experienced before!"

- Plant Health Advising Program Review

Horticulture Program Professional Services Involvement:

- Wisconsin Arborist Association (WAA), Educational Advisor
- WAA Program Committee Member
- WAA Poster Presentation Committee, Chair
- WAA Demonstrational Trial Committee, Member
- Green Industry Outreach Specialist Program Advisor

Program OVERVIEW

- » 1,004 Consumers served
- » 377 Green industry served
- » 236 Short course participants
- » 215 SIG attendees

YOUTH DEVELOPMENT

Positive Youth Development prepares the youth of today to become the effective, empathetic adults of tomorrow. Approximately **294 educational contacts** were made this year through various programs including:

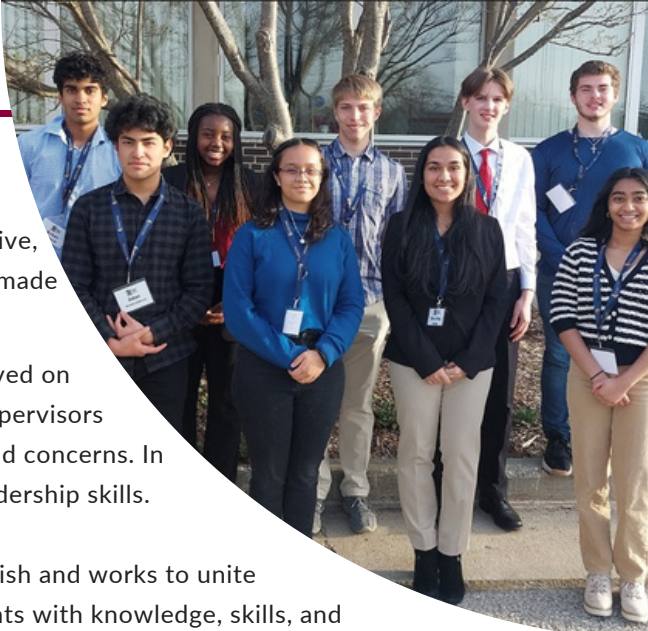
Youth in Governance: Ten (10) youth representing eight area high schools served on the Racine County Board Committees where they were mentored by Board Supervisors during a one-year term. Youth brought their viewpoint to community issues and concerns. In addition, youth developed their confidence, level of civic engagement, and leadership skills.

Juntos Program: Juntos (pronounced “Who-n-toes”) means “Together” in Spanish and works to unite community partners to provide Latino 8th-12th grade students and their parents with knowledge, skills, and resources to prevent youth from dropping out of school and to encourage families to work together to gain access to college. During 2023, workshops were held for students at local area schools where **129 students** learned about higher education options, how to finance college, and how to successfully transition to high school or college.

Sparks Grant: UW-Madison, Division of Extension Racine County was awarded the Sparks Grant from the Wisconsin Board of People with Developmental Disabilities in October of 2023. The grant will be used to pilot a youth-led program that will develop action steps for organizations, schools, and employers on how to be more inclusive of people with disabilities.

Racine County 4-H allows young people to share, grow, and learn together from various projects under the guidance of their families and other leaders. 4-H trainings and events in 2023 included:

- **Adventure Camp:** An outpost camp for 6th to 8th grade 4-H members where participants practice team building, problem solving, and wilderness skills.
- **Base Camp:** An outdoor summer camp for members in 3rd to 5th grades where they strengthened their abilities to cooperate and practice leadership skills.
- **Geocaching Camp:** A day camp for youth and counselors where they participate in a STEM activity, outdoor recreation, team building, nature, and art activities.
- **Club Leader Kick-Off:** Club Leader Kick-Off for volunteers with general and enrollment coordinator positions.
- **Youth/Adult Partnership Officer Training:** A County-wide Officer Training for club officers, junior leader advisors, and club leaders where participants learned about youth/adult partnerships as well as their roles as officers.



4-H Program

OVERVIEW

- » **1,032** Total members
- » **851** Youth members
- » **367** First generation members
- » **181** Adult volunteers

HUMAN DEVELOPMENT AND RELATIONSHIPS

Positive Solutions and Parent Education and Resources: Extension hosted twenty (20) parenting workshops, including three in Spanish. Workshops helped 293 parents/caregivers build knowledge and skills about child development, early learning and literacy, emotion coaching, positive parenting techniques, and coping with parental stress. One Positive Solutions workshop series (5-sessions) was conducted for 20 parents/caregivers on children's social emotional learning to help strengthen families.

Financial Education Programs: A total of 33 veterans and YWCA W-2 Work Experience participants attended "Rent Smart" to help tenants have a successful rental experience. Twelve (12) professionals participated in "Encouraging Financial Conversations" to increase knowledge and confidence when engaging clients in financial conversations. Planning AHEAD, a workshop series to prepare for end of life decisions, was offered at the Burlington Public Library and online with over 65 individuals participants.

Resources for Justice Involved Families Programs: Programs conducted at local justice facilities supported 193 parents in maintaining relationships with their children and fostering early literacy. The Making Reading Memories recorded reading program reached 22 parents, 39 children receiving 45 videos and 46 books, and 31 caregivers.

Programs to Improve Health and Well-Being: Programs that help individuals learn skills to positively cope with stress were offered for clients at Lakeside Curative Services and the YWCA with a total of 25 individuals attending "Taking Care of You" and "WeCOPE" workshops. Self Compassion 101 was offered four times to 69 participants at Waterford Schools, the YWCA, W-2 Job Club, and Racine County Foster Care.

Community Capacity Building, Partnerships, and Outreach: Extension collaborated with community and government agencies to support networking and educational events including the Western Racine County Networking Breakfast with 55 participants from family-serving agencies and a Child Support and Family Court workshop attended by 22 caseworkers and professionals.

To our partners,

Thank you

Acelero Head Start
Burlington Area School District
Burlington Public Library
Family Preservation West
Goodland Montessori
Lakeside Curative Services
Racine Correctional Institute
Racine County Foster Care
Racine County Human Services
Racine County Jail
Racine Literacy Council
Racine Public Library
Racine Unified School District
Racine Youthful Offender Correctional Facility
Sturtevant Transitional Facility
Union Grove Public Library
United Way of Racine County
Veterans Housing and Recovery
Waterford Public Library
YWCA
W-2 Job Club (Equus)
Waterford Schools

Program

OVERVIEW

» 2,265 Contacts

» 724 Parents, caregivers & children engaged in library and community outreach events

» 843 Individuals participated in financial and health workshops

» 698 Individuals attended workshops to support children and families

FOODWISE

Program Outcomes:

In 2023, the Supplemental Nutrition Assistance Program - Education (SNAP-Ed) FoodWise Team provided direct education to:

1,873 participants and reached 6,782 participants indirectly

The SNAP-Ed Program engaged and maintained:

22 partnerships

In 2023, the Expanded Food and Nutrition Education Program (EFNEP) FoodWise Team provided direct education to:

39 adults, 362 youth, and maintained 7 EFNEP partnerships

Additional program highlights include:

- 9 adults received programming in Spanish.
- 4 adults received Around the Table nutrition education.
- 13 adults received nutrition education from the Eating Smart Being Active curriculum.
- The youth who participated in the 2023 program received nutrition education from either the Teen Cuisine or Show Me Nutrition curriculums.
- 28 adults and 267 students graduated from the EFNEP program with food resource management practices that assist participants with stretching their food resource dollars to support a healthier lifestyle.



Extension
UNIVERSITY OF WISCONSIN-MADISON

FOODWISE Program OVERVIEW



6,782 Total participants



1,873 Direct educational contacts



362 Youth engaged



22 Partnerships



Partnership


Highlight

The UW-Madison, Division of Extension, Racine County Nutrition Educators collaborated with a local community partner to strengthen families within the communities. This year, the Racine FoodWise team would like to highlight their partnership with HALO (Homeless Assistance Leadership Organization), a homeless shelter that provides families with wrap-around services that include health and nutrition, housing resources, and employment opportunities. Individuals who are unhoused face many barriers to accessing healthy foods. Therefore, it is essential to provide education to families in different settings such as HALO.

HALO participants wanted to learn how to cook healthy meals with their families and how to bond during mealtime. A Nutrition Educator taught the curriculum Around the Table to over five participants at HALO. Around the Table is a curriculum that provides trauma-informed activities that are designed to improve cooking skills, food safety, food resource management, and healthy eating. Around the Table lessons include information on how to increase awareness surrounding stress, emotional eating, health values, and feeding children.

STAFF DIRECTORY



(262) 767-2929 FoodWise: (262) 635-6824  racine.extension.wisc.edu

ADMINISTRATION



Pam Larson
Area Extension Director
262-767-2929
pamela.larson@wisc.edu



Emily Janes
Admin. Support Staff
262-767-2929
uwextension@racinecounty.com

YOUTH DEVELOPMENT



Maria Gaytan-Martinez
Positive Youth Development
Educator
262-767-2960
maria.gaytanmartinez@wisc.edu



Elizabeth Vazquez
4-H Program Educator
262-767-2915
elizabeth.vazquez@wisc.edu

AGRICULTURE



**Agriculture Educator for
Racine & Kenosha Counties**
Racine: 262-767-2929
Kenosha: 262-857-1945

HUMAN DEVELOPMENT & RELATIONSHIPS



Sarah Hawks
Family and Community
Educator
262-767-2916
sarah.hawks@wisc.edu



Pam Wedig-Kirsch
School Readiness & Family
Resiliency Educator
262-767-2918
pam.wedig-kirsch@wisc.edu

HORTICULTURE



Vijai Pandian
Horticulture Educator
262-857-1933
vijaikumar.pandian@wisc.edu

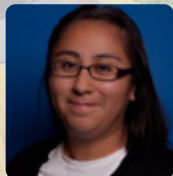


Horticulture Helpline
608-298-6945
planthealth.advisors@extension.wisc.edu

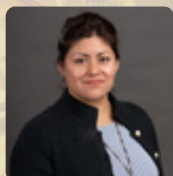
FOODWISE



Atifa Robinson
Nutrition Education Administrator
262-635-6825
atifa.robinson@wisc.edu



Rebecca Ordaz
Administrative Assistant
262-635-6824
rebecca.ordaz@wisc.edu



Rebecca Alonso
Bilingual Nutrition Educator
262-635-6826
rebeca.alonso@wisc.edu



Cassandra Courtright Krusa
Nutrition Educator
262-635-5393
cassandra.courtrightkrusa@wisc.edu



Fabiola Diaz
Bilingual Nutrition Educator
262-635-6837
fabiola.diaznegrete@wisc.edu



Jill Frideres
Nutrition Educator
262-635-5394
jillian.frideres@wisc.edu



Nesrine Ismaili
Nutrition Educator
262-635-6831
nesrine.hajdariismaili@wisc.edu