

ANNUAL REPORT | 20 22



Extension

UNIVERSITY OF WISCONSIN-MADISON
RACINE COUNTY



Racine County
WISCONSIN



Racine County Service Center

1072 Milwaukee Avenue

Burlington, WI 53105



(262) 767-2929



racine.extension.wisc.edu



@RacineCountyUWExtension



An EEO/AA employer, University of Wisconsin Madison Division of Extension provides equal opportunities in employment and programming, including Title VI, Title IX, the Americans with Disabilities Act (ADA) and Section 504 of the Rehabilitation Act requirements.

2022 AT A GLANCE



700

Residents in Racine, Kenosha and Milwaukee Counties participated in the plant health-advising program



1,034

Total 4-H members



1,349

Positive Youth Development educational contacts



2,480

Human Development & Relationships educational contacts



6,477

FoodWise nutrition educational contacts



11,316

Total educational contacts

HORTICULTURE

Plant Health Advising Program

Provided research-based plant health information services to Racine, Kenosha, and Milwaukee County residents, where the educator and trained Master Gardener volunteers answered more than **680** inquiries through email, phone calls, texts, and walk-ins.

Gardening Program for Wisconsin Correctional Institute Inmates

A weekly series of gardening training sessions and activities for Wisconsin Correctional Institute inmates in Sturtevant where **10** inmates improved their garden skills and techniques.

Spring into Gardening Workshop

A four-week workshop for adults where they train and develop gardening skills with the goal to enhance sustainable landscape and gardening. On average, **65** people participated in this program.

Landscape and Grounds Maintenance Short Course

A four-week online program hosted in partnership with Dane, Waukesha, and Sheboygan Counties for the green industry audience. An average of **338** participants learned about emerging issues, new research, new plants, and environmentally sound best practices.

Demonstration Trial and Teaching Garden at Kenosha County Center

Planned and installed research, demonstration, and teaching gardens at Kenosha County Center to provide research based information for the Southeast Wisconsin region about tree diversity, small fruits, vegetables, and fruit crops.

In 2022, the trial programs were highlighted during an Arbor Day celebration and All Bloom Garden Club for the Racine County Horticulture Walk. In addition, five residents participated in the apple bagging session in the orchard to learn about sustainable pest management practices.

“

My inquiry was regarding bugs. I found an abundance on my newly planted evergreens. I received a fast response which I appreciated very much. It was not a harmful pest so I did not need to take action but I definitely had peace of mind.

”



YOUTH DEVELOPMENT

Racine County 4-H

4-H allows young people to share, grow, and learn together from various projects under the guidance of their families and other leaders. 4-H trainings and events were conducted for:

- **Open House:** An open house for families in Racine County to learn about 4-H programming by meeting with club and project leaders and asking questions about 4-H.
- **Volunteers in Preparation:** A training for adults who are interested in becoming 4-H volunteers, where adults learned about how to volunteer with Extension.
- **Supporting Youth Mental Health:** A virtual workshop for adult 4-H volunteers statewide, where participants learn the signs of a youth in a mental health crisis and how to respond.

Youth in Governance

Ten youth representing nine area high schools served on Racine County Board Committees. Board Supervisors mentored youth representatives during their one-year term of service, during which youth brought their viewpoint to community issues and concerns. By the end of their term, representatives conducted drives within their school to collect items for Foster Care Backpacks. **50** backpacks were assembled and additional art supplies, hygiene products, books, blankets, and fidget toys were given to Racine County Foster Care for distribution.

Well Connected Communities Grant

The Well Connected Communities Grant funded by the Robert Wood Johnson Foundation focuses on cultivating wellness and a culture of health in Racine County. The goal is to collaborate with youth and adults in Racine County to expand our potential to promote health and wellness by centering on youth voice and addressing policy, systems, and environmental changes. Youth conducted surveys, interviewed staff and residents, created three separate action plans for change, and presented the action plans to staff and administration at the Racine County Juvenile Detention Center resulting in positive environmental change at the facility.

Juntos Program

Juntos (pronounced “Who-n-toes”) means “Together” in Spanish and works to unite community partners to provide Latino 8th to 12th grade students and their parents resources to achieve academic success. During 2022, **20** workshops were held at Burlington High School, Mitchell Middle School, Case High School, Horlick High School, and Park High School resulting in **1,041** students learning about higher education options, how to finance college, and how to successfully transition to high school or college. These sessions were co-facilitated with Human Development and Relationships educator, Sarah Hawks.



HUMAN DEVELOPMENT AND RELATIONSHIPS

Supporting the Child Care Sector

79 childcare providers attended workshops on the topics of Supporting Children of Parental Incarceration, Supporting Children using a Trauma Informed Lens and Thriving with Your Spirited Child.

Positive Solutions and Parent Education and Resources

Extension hosted **22** parenting workshops, including four in Spanish. Workshops helped **412** parents/caregivers build knowledge and skills about child development, early learning and literacy, emotion coaching, positive parenting techniques, and coping with parental stress. Two Positive Solutions workshop series (5 weeks each) were conducted for **28** parents/caregivers on children's social emotional learning to help strengthen families.

Financial Education Programs

Fifty (**50**) Veterans and YWCA W-2 Work Experience participants attended "Rent Smart" to help tenants have a successful rental experience. Sixteen (**16**) professionals participated in "Encouraging Financial Conversations" to increase knowledge and confidence in engaging clients in financial conversations. Seven Veterans participated in "Money Smart" workshops on topics related to credit, saving, and protecting. Over **60** individuals attended Planning AHEAD to prepare for end of life decisions.

Resources for Justice Involved Families

Programs at local justice facilities supported **150** parents in maintaining relationships with their children and fostering early literacy. The Making Reading Memories recorded reading program reached **34** parents, **56** children, and **37** caregivers. Outreach at the Racine County Jail during Sunday visits supported **97** parents/caregivers and children. Improvements to two visiting spaces resulted in an environment that is developmentally engaging for children and fosters early literacy; and **27** children and their caregivers received literacy kits.

Community Capacity Building, Partnerships, and Outreach

Extension collaborated with community and government agencies to support networking and educational events including the Western Racine County Networking Event (**47** participants from family-serving agencies); and a Child Support and Family Court workshop attended by **36** caseworkers and professionals.

Thank you to our partners:

Acelero Head Start | Burlington Area School District | Burlington Public Library | Family Preservation West
Racine Correctional Center | Racine County Foster Care | Racine County Human Services | Racine County Jail
Racine Public Library | Racine Unified School District | Racine Youthful Offender Correctional Facility
St Patrick's Catholic Church | Sturtevant Transitional Facility | United Way of Racine County
Veteran Housing and Recovery | Waterford Public Library | YWCA

2,480

Educational contacts

1,728

Number are people who attended a workshop

752

Parents, caregivers, & children engaged at outreach events



The University of Madison, Division of Extension Racine and Kenosha FoodWise program goal is to provide learning opportunities and empower communities to select healthy foods and beverages. Nutrition Education is an essential part of improving health outcomes within the Racine community.

In 2022, the Racine and Kenosha FoodWise Nutrition Educators provided direct education to **2,471** participants, in schools ranging from kindergarten through twelfth grade, early care, and education facilities, emergency shelters, food pantries, and adult education or job training sites.

The FoodWise program reached **12,827** participants through indirect education at **73** agencies including the Racine County Food Bank, local public libraries, Racine Unified School District, and United Way of Racine County.

Program Success Story-Teacher Role Modeling Healthy Eating Behaviors

In 2022, the Racine and Kenosha FoodWise Team provided nutrition education to **163** second grade students at Julian Thomas Elementary, Knapp Elementary, and Mitchell Elementary School in Racine Unified School District. Teachers modeled healthy eating behaviors to reinforce nutrition lessons.

Second graders received nutrition education from the literacy-based curriculum *Read for Health*. Lesson objectives focused on learning MyPlate food groups, drinking more water, trying new foods, the importance of physical activity, making healthy snack choices, washing hands, and eating more fruits and vegetables. Each lesson included an interactive learning game/activity, a lesson-related book/story time, food tasting, and lesson-reinforcement materials for parents/guardians.


Two second grade teachers inspired students to eat an increased amount of fruits and vegetables by modeling nutrition lessons learned. One teacher shared, "I like fruit water, and I started bringing it to work to drink. Everyday, the students have to see what flavor I made." Some students brought their own in, while others verbally shared in class the types of fruit water they made at home.

After trying jicama and cucumber with lime and an optional chili powder sprinkle in a "healthy snacks" lesson, a Knapp Elementary teacher started bringing it as her daily school snack. Teachers role modeling healthy eating behaviors serve as a powerful reinforcement of messages taught in FoodWise lessons. This can lead to healthy food choices in youth.



STAFF DIRECTORY

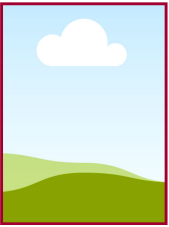
 (262) 767-2929  FoodWise: (262) 635-6824

 racine.extension.wisc.edu

Administration



Pam Larson
Area Extension Director
262-767-2929
pamela.larson@wisc.edu



**Administrative
Support Staff**
262-767-2929
uwextension@racinecounty.com

Youth Development



Maria Gaytan-Martinez
Positive Youth Development
Extension Educator
262-767-2960
pamela.larson@wisc.edu



Elizabeth Vazquez
4-H Program Educator
262-767-2915
elizabeth.vazquez@wisc.edu

Human Development & Relationships

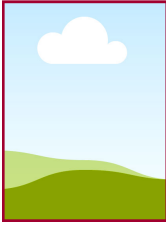


Sarah Hawks
Family and Community
Educator
262-767-2929
sarah.hawks@wisc.edu



Pam Wedig-Kirsch
School Readiness & Family
Resiliency Educator
262-767-2918
pam.wedig-kirsch@wisc.edu

Agriculture

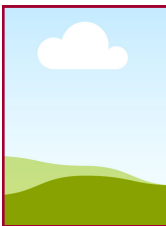


**Agriculture Educator for
Racine & Kenosha Counties**
Racine: 262-767-2929
Kenosha: 262-857-1945

Horticulture



Vijai Pandian
Horticulture Educator
262-857-1933
vijaikumar.pandian@wisc.edu

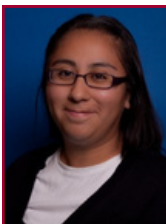


Horticulture Helpline
608-298-6945
planthealth.advisors@extension.wisc.edu

FoodWise



Atifa Robinson
Nutrition Education Administrator
262-635-6825
arobinson24@wisc.edu



Rebecca Ordaz
Office Operations Associate
262-635-6824
Rebecca.ordaz@wisc.edu



Fabiola Diaz
Bilingual Nutrition Educator
262-635-6837
fabiola.diaznegrete@wisc.edu



Nesrine Ismaili
Nutrition Educator
262-635-6831
nesrine.hajdariismaili@wisc.edu



Jill Frideres
Nutrition Educator
262-635-5394
jillian.frideres@wisc.edu



Rebecca Alonso
Bilingual Nutrition Educator
262-635-6826
rebeca.alonso@wisc.edu